

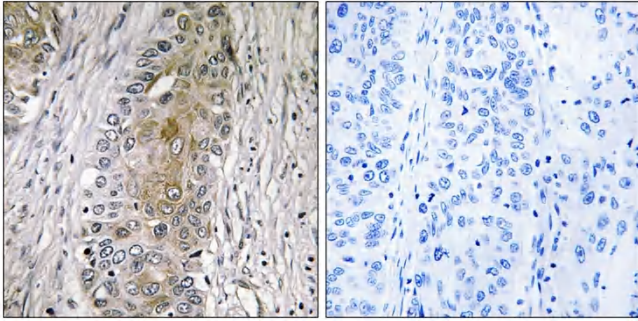


SAA4 Polyclonal Antibody

Catalog No	YP-Ab-04184
Isotype	IgG
Reactivity	Human;Rat;Mouse;
Applications	IHC;IF;ELISA
Gene Name	SAA4
Protein Name	Serum amyloid A-4 protein
Immunogen	The antiserum was produced against synthesized peptide derived from human SAA4. AA range:81-130
Specificity	SAA4 Polyclonal Antibody detects endogenous levels of SAA4 protein.
Formulation	Liquid in PBS containing 50% glycerol, 0.5% BSA and 0.02% sodium azide.
Source	Polyclonal, Rabbit,IgG
Purification	The antibody was affinity-purified from rabbit antiserum by affinity-chromatography using epitope-specific immunogen.
Dilution	IHC: 1/100 - 1/300. ELISA: 1/40000.. IF 1:50-200
Concentration	1 mg/ml
Purity	≥90%
Storage Stability	-20°C/1 year
Synonyms	SAA4; CSAA; Serum amyloid A-4 protein; Constitutively expressed serum amyloid A protein; C-SAA
Observed Band	
Cell Pathway	Secreted .
Tissue Specificity	Expressed by the liver; secreted in plasma.
Function	function:Major acute phase reactant. Apolipoprotein of the HDL complex.,induction:Constitutively expressed.,similarity:Belongs to the SAA family.,tissue specificity:Expressed by the liver; secreted in plasma.,
Background	function:Major acute phase reactant. Apolipoprotein of the HDL complex.,induction:Constitutively expressed.,similarity:Belongs to the SAA family.,tissue specificity:Expressed by the liver; secreted in plasma.,
matters needing attention	Avoid repeated freezing and thawing!
Usage suggestions	This product can be used in immunological reaction related experiments. For more information, please consult technical personnel.



Products Images



Immunohistochemistry analysis of paraffin-embedded human lung carcinoma, using SAA4 Antibody. The picture on the right is blocked with the synthesized peptide.